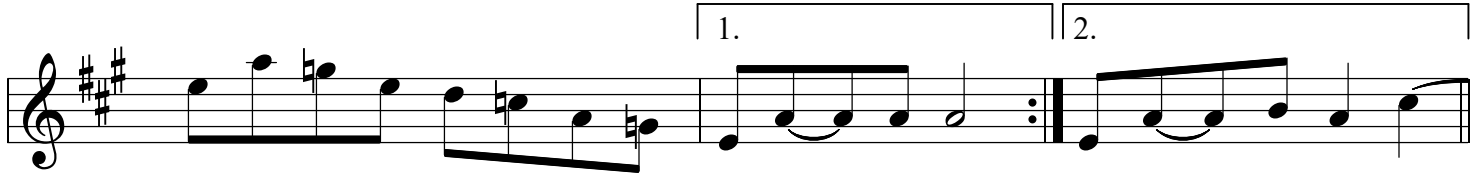


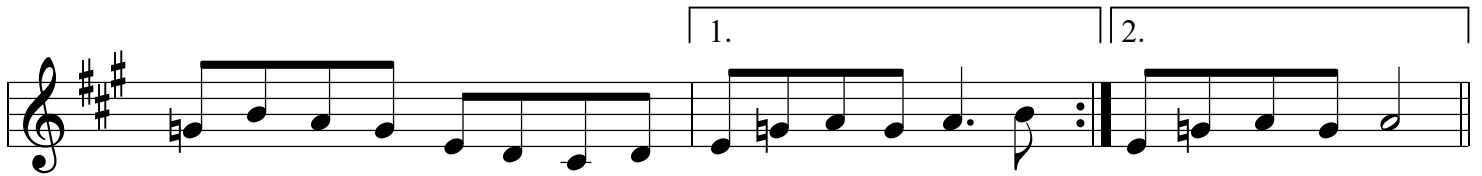
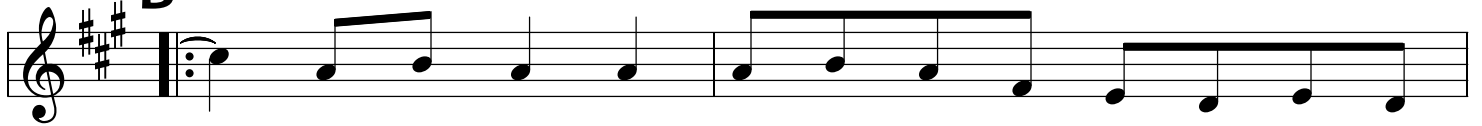
Hickory Jack

(Art Stamper - fiddle)

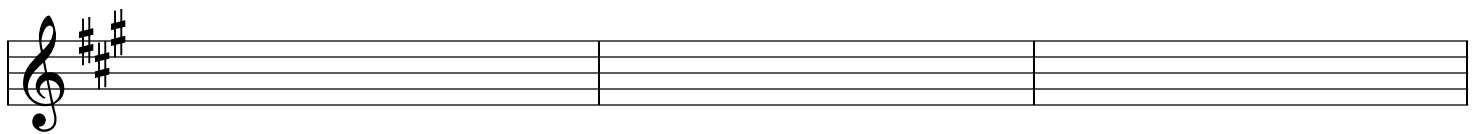
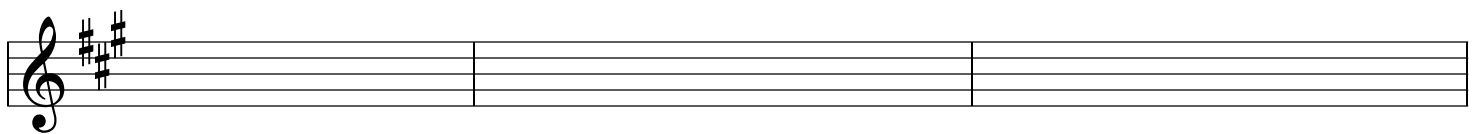
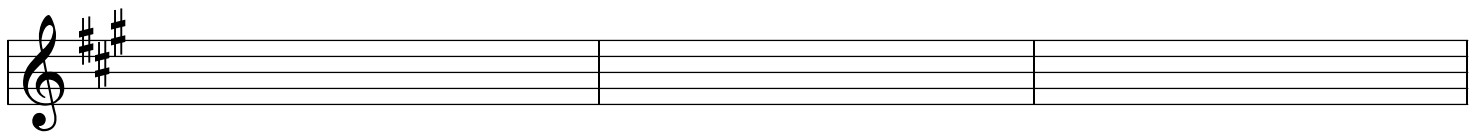
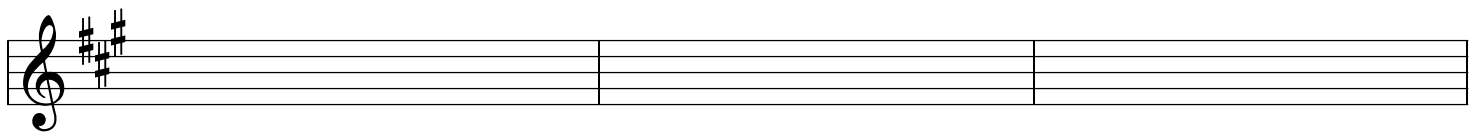
A



B



C



tuning=GDAE

Hickory Jack p. 2

(Matt Brown - fiddle)

A A E

B A

E A

C A E A

E

A A

E A

tuning=GDAe

Hickory Jack p. 3

(Luther Strong - fiddle)

A

Section A consists of four measures of music in treble clef with a key signature of three sharps (F#, C#, G#). The first measure begins with a repeat sign. The melody is primarily eighth and quarter notes, with some beamed eighth notes. The bass line consists of a few notes, including a half note and a quarter note.

B

Section B consists of four measures of music in treble clef with a key signature of three sharps. The first measure begins with a repeat sign. The melody continues with eighth and quarter notes. The bass line features a steady eighth-note accompaniment.

C

Section C consists of four measures of music in treble clef with a key signature of three sharps. The first measure begins with a repeat sign. The melody continues with eighth and quarter notes. The bass line features a steady eighth-note accompaniment. The final measure of section C is followed by four empty staves.