

# Swamp Cat Rag

(Lowe Stokes - fiddle)

## A

Section A consists of six measures of music in G major. The first measure is marked with a repeat sign and a G chord. The melody features eighth and quarter notes, with some beamed eighth notes. The bass line consists of quarter notes. The second measure continues the melody. The third measure has a D chord above it. The fourth measure has a G chord above it. The fifth measure continues the melody. The sixth measure ends with a repeat sign and a G chord.

## B

Section B consists of six measures of music in G major. The first measure is marked with a repeat sign and a G chord. The melody features eighth and quarter notes, with some beamed eighth notes. The bass line consists of quarter notes. The second measure continues the melody. The third measure has a D chord above it. The fourth measure has a G chord above it. The fifth measure continues the melody. The sixth measure ends with a repeat sign and a G chord.

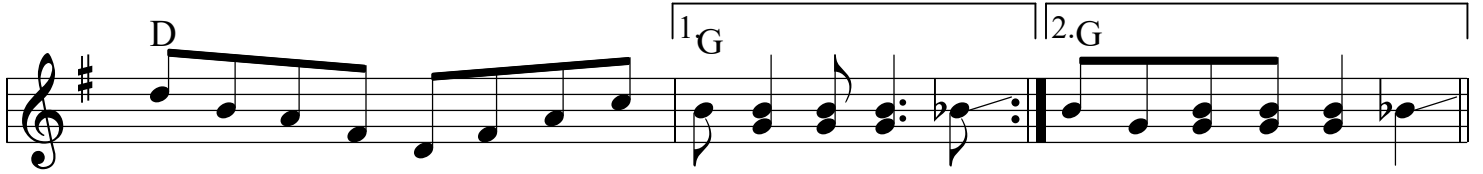
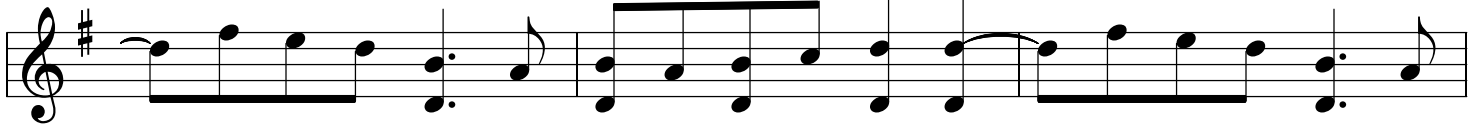
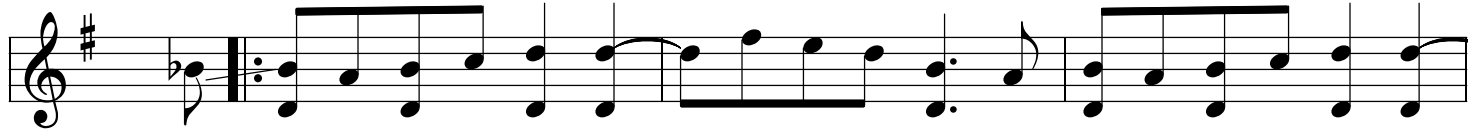
An empty musical staff in G major, consisting of five lines.

A second empty musical staff in G major, consisting of five lines.

# Swamp Cat Rag p. 2

(Betse Ellis - fiddle)

**A** G



**B** G

